



Boat Location Tracking Feature Overview

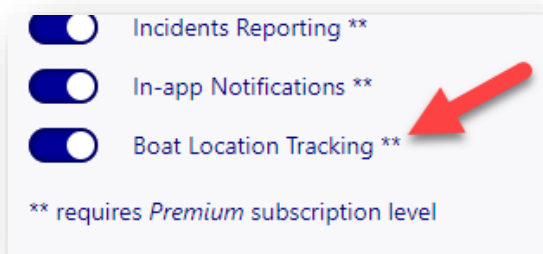
IMPORTANT: The boat location tracking feature of iCrew is designed to show the location of club boats when a rower in the boat has activated location tracking from their mobile device. This feature can also be used to track coaches in a launch. It is the responsibility of each club to maintain up-to-date risk assessments and define and monitor its own safety practices, guidance, and procedures specific to its environment and activities, which clubs shall ensure are made known to their members and members shall comply with the same. It is the responsibility of the club to ensure that such information and guidance is up to date.

DISCLAIMER: iCrew is not responsible for any injury or loss of property to any person suffered while utilizing the boat location tracking feature for any reason whatsoever. Appropriate safety practices should always be followed.

Enable Boat Location Tracking

NOTE: This feature is only available to clubs on the **Premium** subscription of iCrew. Detailed tracking data is deleted after **90 days**. If you would like to retain the data for a longer period, contact iCrew (icrew.club@gmail.com).

To enable this feature, a club *administrator* must turn on the **Boat Location Tracking** feature from the **Club Profile** under **Functionality On/Off Switches**.



Rower Instructions

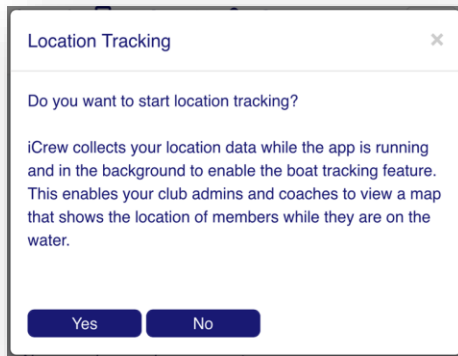
The iOS/iPhone and Android iCrew apps have been updated to utilize the location tracking feature of a mobile device to send the location to iCrew when location tracking is activated.

IMPORTANT: When prompted to allow location tracking, the person must select **"While using the app"**.

As a rower gets ready to go out onto the water, they can start location tracking by tapping **this icon** at the top of the iCrew app.



The following dialog will be shown.

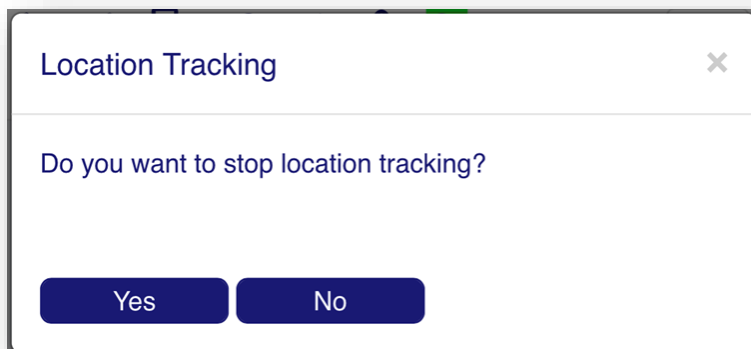


The rower can then put their phone away in a safe place on the boat. A waterproof bag for the phone is recommended.

While the location tracking feature is active, *this icon* will be shown at the top of the iCrew app. The **green highlight** indicates that location tracking is active.



When the rower has returned to land, they should tap this icon to stop the location tracking. The following confirmation dialog will appear.



Club members can have iCrew send an email notification to family and friends when they start a location tracking session. They must enter the email addresses in the **Family and friends emails** field on their profile under **Rower Settings**.

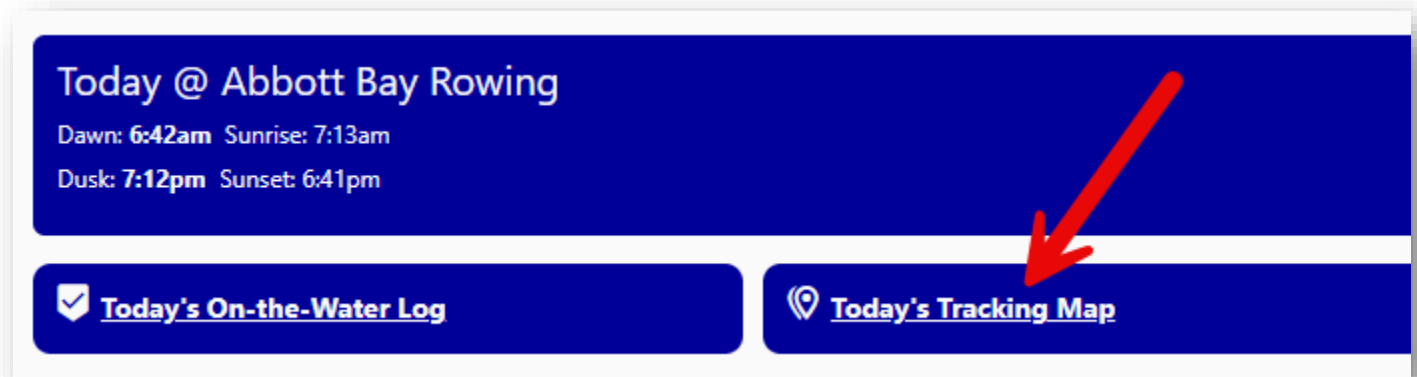
Family and friends emails:

For location sharing. Separate each with ;

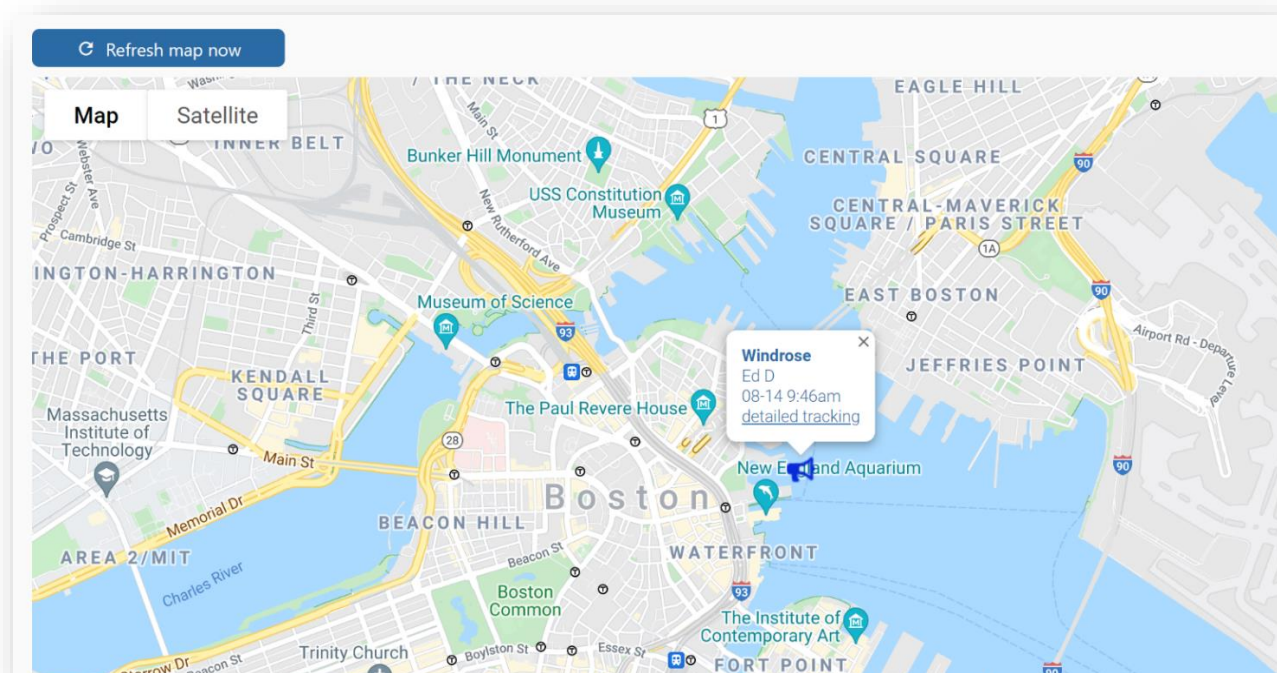
kgoyena@hotmail.com;someone@gmail.com

Tracking Location of Boats

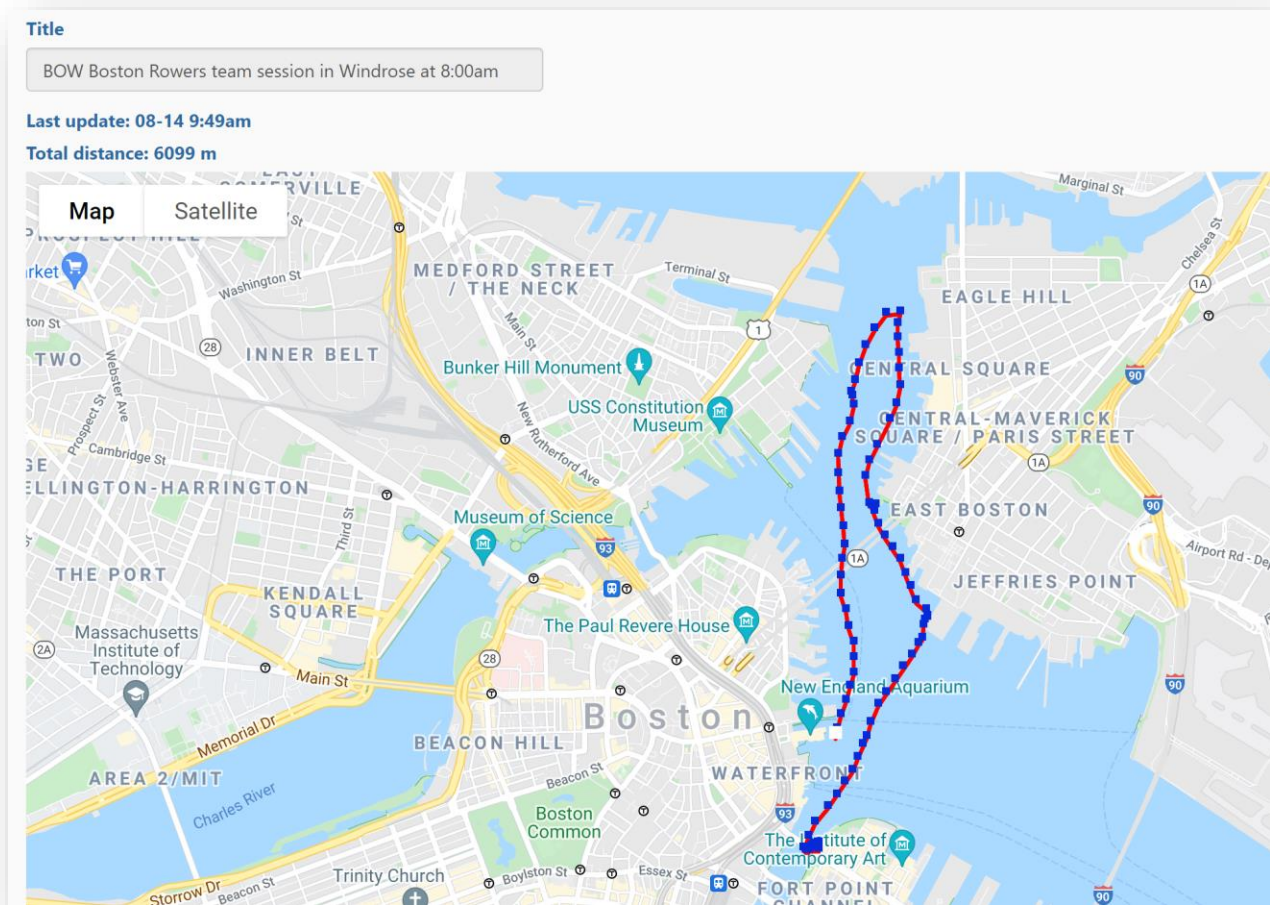
Boathouse managers, admins and coaches can view a map of active tracking sessions. To view all active boat location tracking sessions, open the **Today** page and tap the **Today's Tracking Map** link. You can also access the tracking map from the **On-the-Water Log** page.



Here is a screen shot of the location tracking map showing one active session. By tapping the icon, a pop-up will be shown with a link to view the detailed tracking map.



Here is a screen shot of the detailed location tracking map for a given session.



A list of all the day's tracking sessions is also listed under the map.

Watch this short video to learn how to view active location tracking sessions.

<https://www.screencast.com/t/73t6Vrfj>